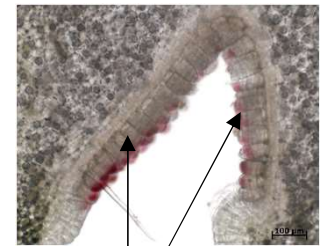
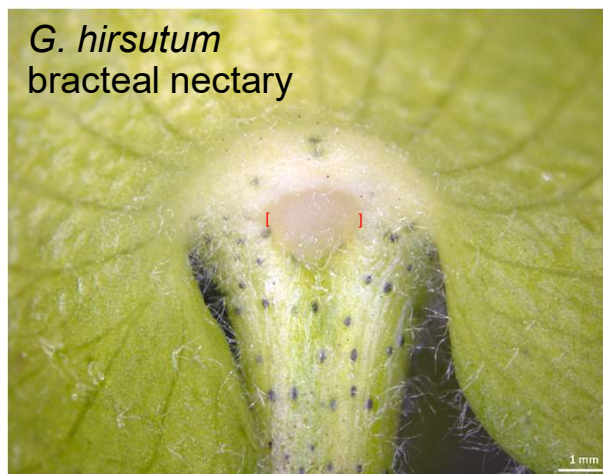
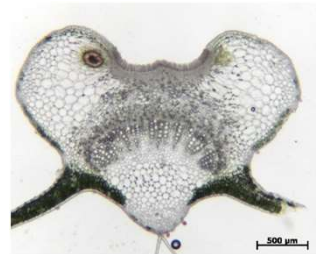
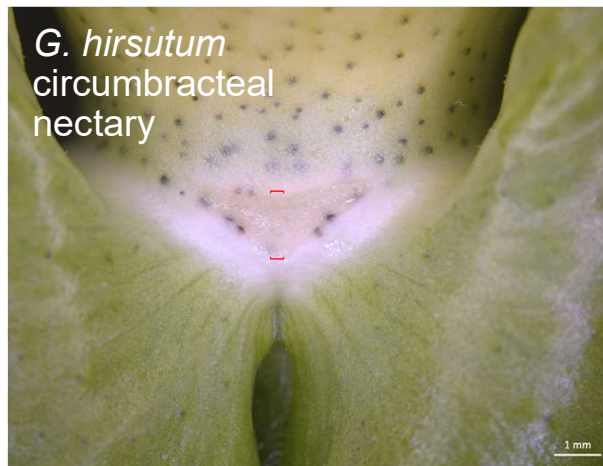


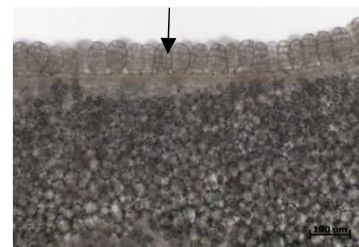
Gossypium hirsutum (cotton) extrafloral nectaries



secretory epithelial cells



secretory epithelial cells



Cotton has three types of extrafloral nectaries, which have been collected for transcriptomic analyses. The nectar has also been collected for metabolomic and proteomic analyses. Very few reports on cotton nectary structure exist, which are poorly detailed. Therefore, the nectaries shown above were sectioned and imaged. Unlike most other nectary types in the current study, which use modified open stomata for nectar release, cotton extrafloral nectaries have specialized epithelial cells. Cotton flowers also have trichome-based nectaries, which have been collected for 'omics analyses.